

Ejercicios preparados:

El aspirante debe tener las habilidades para leer ejercicios rítmicos en compases binarios y ternarios con figuras rítmicas sencillas. Para su ejecución puede utilizar cualquier combinación silábica siempre y cuando la articulación de las figuras rítmicas sean claras.

Ejercicios tomados de: Hall CAROTHERS, A. (2005). *STUDYING RHYTHM*. PEARSON/PRENTICE HALL.

Ejercicio 1

♩ = 120

The first staff of Ejercicio 1 is in 4/4 time and contains 12 measures. The notes are: M1: quarter, quarter; M2: half; M3: eighth, eighth, eighth, eighth; M4: quarter, quarter; M5: eighth, eighth, eighth, eighth; M6: quarter, quarter; M7: eighth, eighth, eighth, eighth; M8: quarter, quarter; M9: quarter, quarter; M10: quarter, quarter; M11: quarter, quarter; M12: quarter, quarter. The second staff contains 12 measures: M1: eighth, eighth, eighth, eighth; M2: quarter, quarter; M3: quarter, quarter; M4: quarter, quarter; M5: quarter, quarter; M6: quarter, quarter; M7: quarter, quarter; M8: quarter, quarter; M9: quarter, quarter; M10: quarter, quarter; M11: quarter, quarter; M12: quarter, quarter. The third staff contains 12 measures: M1: quarter, quarter; M2: quarter, quarter; M3: quarter, quarter; M4: quarter, quarter; M5: quarter, quarter; M6: quarter, quarter; M7: quarter, quarter; M8: quarter, quarter; M9: quarter, quarter; M10: quarter, quarter; M11: quarter, quarter; M12: quarter, quarter.

Ejercicio 2

♩ = 120

The first staff of Ejercicio 2 is in 3/4 time and contains 12 measures. The notes are: M1: quarter, quarter; M2: quarter, quarter; M3: quarter, quarter; M4: quarter, quarter; M5: quarter, quarter; M6: quarter, quarter; M7: quarter, quarter; M8: quarter, quarter; M9: quarter, quarter; M10: quarter, quarter; M11: quarter, quarter; M12: quarter, quarter. The second staff contains 12 measures: M1: quarter, quarter; M2: quarter, quarter; M3: quarter, quarter; M4: quarter, quarter; M5: quarter, quarter; M6: quarter, quarter; M7: quarter, quarter; M8: quarter, quarter; M9: quarter, quarter; M10: quarter, quarter; M11: quarter, quarter; M12: quarter, quarter. The third staff contains 12 measures: M1: quarter, quarter; M2: quarter, quarter; M3: quarter, quarter; M4: quarter, quarter; M5: quarter, quarter; M6: quarter, quarter; M7: quarter, quarter; M8: quarter, quarter; M9: quarter, quarter; M10: quarter, quarter; M11: quarter, quarter; M12: quarter, quarter.

Ejercicio 3

♩ = 116

Musical score for Ejercicio 3, 6/8 time signature. The piece consists of three staves of music. The first staff begins with a dynamic marking of *mf* and ends with a dynamic marking of *f*. The second and third staves continue the melodic line, with the third staff ending with a dynamic marking of *f*. The music features eighth and sixteenth notes, often beamed together, and includes rests.

Ejercicio 4

♩ = 96

Musical score for Ejercicio 4, 2/4 time signature. The piece consists of three staves of music. The music is characterized by a steady eighth-note pattern, often beamed in groups of four or six. The first staff starts with a quarter rest followed by the eighth-note pattern. The second and third staves continue this pattern, with the third staff ending with a quarter rest. There are no dynamic markings present in this exercise.

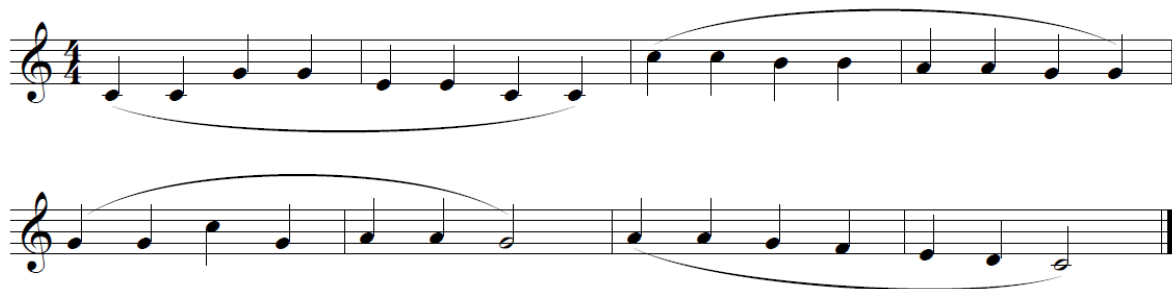
Lectura entonada (rítmico melódica)

Se propone una serie de ejercicios en tonalidad mayor contruidos a partir de grados conjuntos diatónicos y de arpeggios de la triada de tónica. Estos ejercicios ponen a prueba las habilidades auditivas y de entonación del aspirante que le permiten ubicarse en una tonalidad, efectuando sus tensiones y resoluciones melódicas.

Ejercicios tomados de: Krueger, C. J. (2007). *Progressive sight singing*. Oxford University Press, USA.

Ejercicios tomados de: Rogers, N., & Ottman, R. W. (2019). *Music for sight singing*. Upper Saddle River, NJ: Pearson.

Ejercicio 1



Ejercicio 2

Musical notation for Ejercicio 2, consisting of three staves of music in G major (one sharp) and 3/4 time. The first staff begins with a treble clef, a key signature of one sharp (F#), and a 3/4 time signature. The melody consists of two phrases, each spanning four measures and marked with a slur. The first phrase starts on G4 and moves stepwise up to D5, then descends. The second phrase starts on G4 and moves stepwise up to D5, then descends. The second and third staves continue the melody in a similar stepwise fashion, with the third staff ending with a double bar line and repeat dots.

Ejercicio 3

Musical notation for Ejercicio 3, consisting of two staves of music in G major (one sharp) and common time (C). The first staff begins with a treble clef, a key signature of one sharp (F#), and a common time signature. The melody consists of four measures, each starting with a quarter rest followed by a quarter note. The notes are G4, A4, B4, and C5. The second staff continues the melody with four more measures, each starting with a quarter rest followed by a quarter note. The notes are B4, A4, G4, and F#4. The piece ends with a double bar line.

Ejercicio 4

Musical notation for Ejercicio 4, consisting of two staves of music in G major (one sharp) and 4/4 time. The first staff begins with a treble clef, a key signature of one sharp (F#), and a 4/4 time signature. The melody consists of eight measures of quarter notes: G4, A4, B4, C5, B4, A4, G4, and F#4. The second staff continues the melody with four more measures of quarter notes: E4, D4, C4, and B3. The piece ends with a double bar line.

Ejercicio 5

Musical notation for Ejercicio 5, consisting of two staves in G major, 4/4 time. The first staff contains two measures of music with a slur over the first four notes and a fermata over the last two. The second staff contains two measures with a slur over the first four notes and a fermata over the last two, ending with a double bar line.

Ejercicio 6

Musical notation for Ejercicio 6, consisting of three staves in B-flat major, 3/4 time. The first staff starts with a piano (*p*) dynamic and includes accents. The second staff starts with a forte (*f*) dynamic and includes a repeat sign. The third staff starts with a fortissimo (*fz*) dynamic, includes a crescendo hairpin, and ends with a piano (*p*) dynamic and a repeat sign.